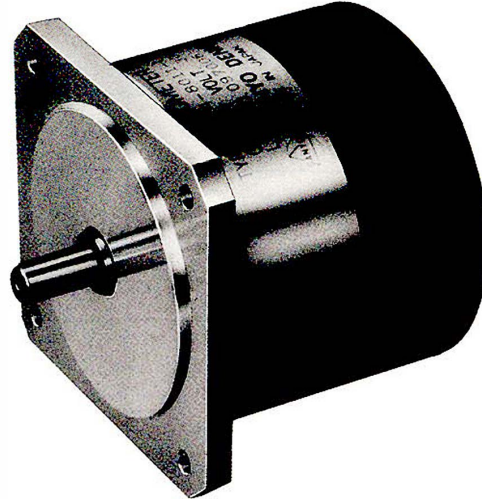


DC TACHOMETER GENERATOR

COMPACT & LOW-RIPPLE¹ NEW TACHO-GENERATOR



DC Tachometer Generator, for various applications to detect and indicate rotation speed and feedback of each control equipment, has been developed through SANYO DENKI's rich experiences and research for many years.

It is widely used for speed and position control and numerical control of machinery for various fields such as computer peripherals, measuring devices and machine tools.

These models have excellent performance of linearity in wide range, low ripple voltage and high efficiency by selecting the best materials for ball bearings, permanens magnets and brushes.

NOTEWORTHLY POINTS

- **Excellent Linearity**

Excellent in linearity over wide range from ultra low speed.

- **Remarkably low ripple voltage**

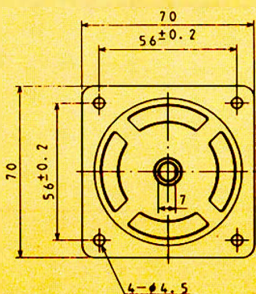
The ripple voltage (rms and p-p value) is kept remarkably low by selecting special brush materials and increasing slot numbers.

- **Minimum Thermal Drift**

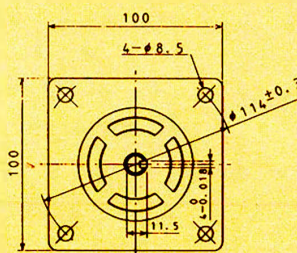
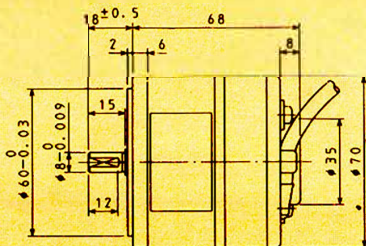
Magnet materials and machining procedures have been carefully selected and/or examined to minimize thermal drift and keep linear output.

- **Compact and Light Weight**

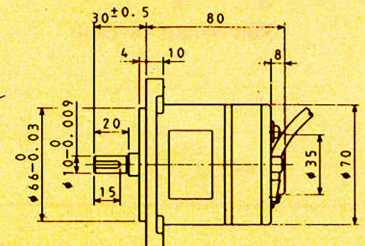
Reduced the weight and shortened the length remarkably compared with conventional model, in order to save space in applications.



104-8012-1(104-8011-1)



104-9011-1

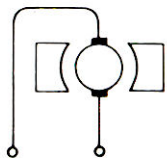


DC TACHOMETER GENERATOR

CHARACTERISTICS

| MODEL NO. | | 104-8012-1 | 104-8011-1 | 104-9011-1 |
|------------------------------------|----------------------|--------------|-----------------|-----------------|
| CHARACTERISTICS | | | | |
| Output Voltage | (V/1000r.p.m.) | $7 \pm 10\%$ | 30_{-0}^{+10} | 60_{-0}^{+10} |
| Maximum Speed | (r.p.m.) | 4,000 | 4,000 | 4,000 |
| Linearity | (% max.) | 1 | 1 | 1 |
| P-P Ripple | (% max.) | 1 | 1 | 1 |
| Rms Ripple | (% max.) | 0.5 | 0.5 | 0.5 |
| Bidirectional Error | (% max.) | 1.0 | 1.0 | 1.0 |
| Internal Impedance • DC Resistance | (Ω) | 25 | 200 | 260 |
| Internal Impedance Inductance | (mH) | 5 | 100 | 140 |
| Rotor Inertia | (g-cm ²) | 470 | 470 | 800 |
| Friction Torque | (g-cm) | 150 | 150 | 250 |
| Maximum Current | (mA) | 50 | 50 | 50 |
| Output Thermal Coefficient | (%/°C) | 0.04 | 0.04 | 0.04 |
| Weight | (g) | 0.8K | 0.8K | 1.0K |

INTERNAL CONNECTION

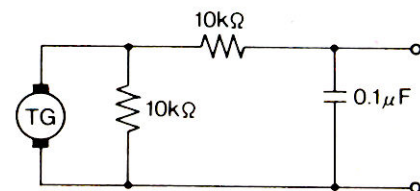


Red White or Blue

* POLARITY

When TG rotates in counterclockwise as viewed from the shaft end, polarity is positive (+) on terminal 1 or red, and negative (-) on terminal 2 or white.

TEST LOAD FILTER



SANYO DENKI CO., LTD.

15-1, KITAOTSUKA 1-CHOME, TOSHIMA-KU, TOKYO 170, JAPAN
 TEL: TOKYO (03) 917-5151 FAX: (03) 918-5206
 TELEX: 2722176 SANYO T J



World Wide Orders : www.encodermarket.com
info@encodermarket.com