


**Motor-Feedback System**

VFS60A-  
BHPZ0-S01

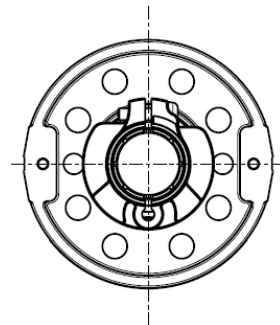
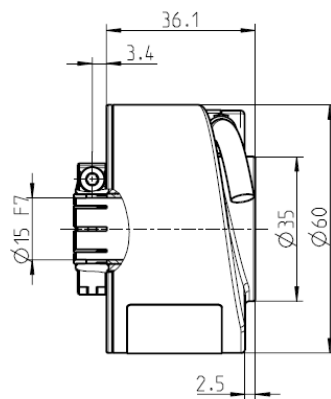
	Number of lines programmable
<b>Motor Feedback System</b>	

**Deviation to Standard Motor-Feedback-System**  
VFS60A-BHPJ01024

- Customized flange
- Without stator coupling

**Features**

- Number of lines programmable up to 65,536
- Electrical Interface programmable
- Blind hollow shaft 15 mm
- Connection type, cable 8-core, universal, 0.5 m



Order information	
Type	Part no.
VFS60A-BHPZ0-S01	1036255

Technical Data acc. to DIN 32878		VFS60A-BHPZ0- S01
<b>Hollow shaft diameter</b>		15 mm
<b>Electrical Interface</b>		TTL/ RS422, 6 channel <sup>1)</sup>
<b>Number of lines per revolution</b>		1,024 <sup>1)</sup>
<b>Mass</b>		0.2 kg
<b>Moment of inertia of the rotor</b>		40 gcm <sup>2</sup>
<b>Measuring step</b>		90°/number of lines electr.
<b>Reference signal</b>		
Number		1
Position		90° electrical and logical interlocked with A + B <sup>1)</sup>
<b>Error limits</b>		± 0.03°
<b>Measuring step deviation</b>		± 0.01°
<b>Max. output frequency</b> TTL/RS 422		820 kHz
<b>Operating speed</b>		6,000 rpm
<b>Angular acceleration</b>		5 x 10 <sup>5</sup> rad/s <sup>2</sup>
<b>Operating torque</b> at 20 °C		0.6 Ncm
<b>Starting torque</b> at 20 °C		0.8 Ncm
<b>Permissible movement of the drive element</b>		
Radial static/ dynamic		± 0.3/ ± 0.05 mm
Axial static/ dynamic		± 0.5/ ± 0.01 mm
<b>Bearing lifetime</b>		3 x 10 <sup>9</sup> revolutions
<b>Working temperature range</b>		- 20 ... + 100 °C
<b>Storage temperature range (without package)</b>		- 40 ... + 100 °C
<b>Permissible relative humidity<sup>2)</sup></b>		90 %
<b>EMC <sup>3)</sup></b>		
<b>Resistance to shocks <sup>4)</sup></b>		60 g/6 ms
<b>Resistance to vibration <sup>5)</sup></b>		20 g/10 ... 2,000 Hz
<b>Protection class acc. IEC 60529</b>		IP 65
<b>Load current</b> 5...32V, TTL/HTL programmable		max 30 mA <sup>1)</sup>
<b>No-load operating current</b> 5...32V, TTL/HTL programmable		60 mA <sup>1)</sup>
<b>Initialisation time after power on</b>		1,000 ms

<sup>1)</sup> Configuration ex works

<sup>2)</sup> Condensation not permitted

<sup>3)</sup> Acc. EN 61000-6-3 and EN 61000-6-2

<sup>4)</sup> Acc. EN 60068-2-27

<sup>5)</sup> Acc. EN 60068-2-6